



41 Hillfoot Avenue

, Wishaw, ML2 8TR

Offers over £199,000

Rarely available, an outstanding opportunity to purchase a spacious, extended semi detached villa, in a highly sought after residential location within Branchalwood Wishaw.

Internal viewing is a must to appreciate the size of accommodation on offer.

Comprising reception hallway, large bright lounge, a stunning dining kitchen with all appliances and triple glazed bifold doors overlooking and offering access to the private enclosed rear garden, three bedrooms all with storage and family bathroom.

Further benefits include double glazing, gas central heating, large mature garden to rear with a driveway to the side of the property and landscaped front for easy maintenance

EPC C

Hillfoot Avenue is situated minutes from Wishaw Town Centre where all day-to-day requirements can be catered for including all shopping, schooling and transport links. For the commuter the nearby M74 & M8 motorway networks allow for fast and easy access to Glasgow, Edinburgh and all points beyond.

Viewing

Please contact our Pomphreys Properties Ltd Office on 01698373365 if you wish to arrange a viewing appointment for this property or require further information.

- CLOSING DATE SET TUESDAY 9TH JUNE AT NOON
- Driveway
- Fabulous Fitted Kitchen and Dining Room with Bifold Doors
- Three Bedrooms
- Large Rear Garden



3



1



2



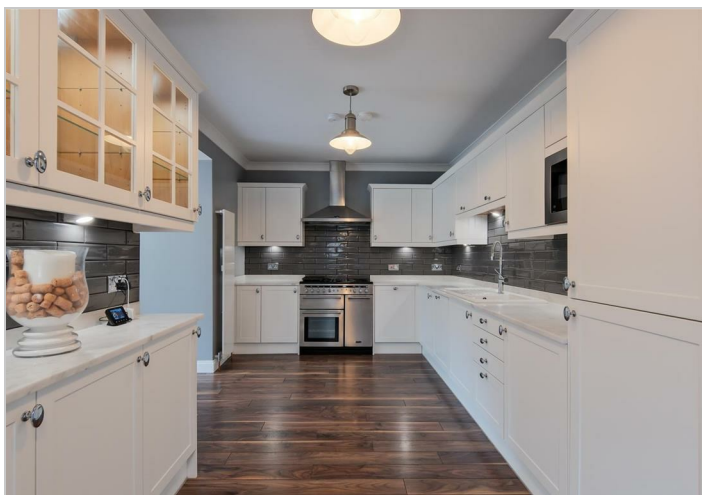
Floor Plan



Area Map



Energy Efficiency Graph



These particulars, whilst believed to be accurate are set out as a general outline only for guidance and do not constitute any part of an offer or contract. Intending purchasers should not rely on them as statements of representation of fact, but must satisfy themselves by inspection or otherwise as to their accuracy. No person in this firms employment has the authority to make or give any representation or warranty in respect of the property.